

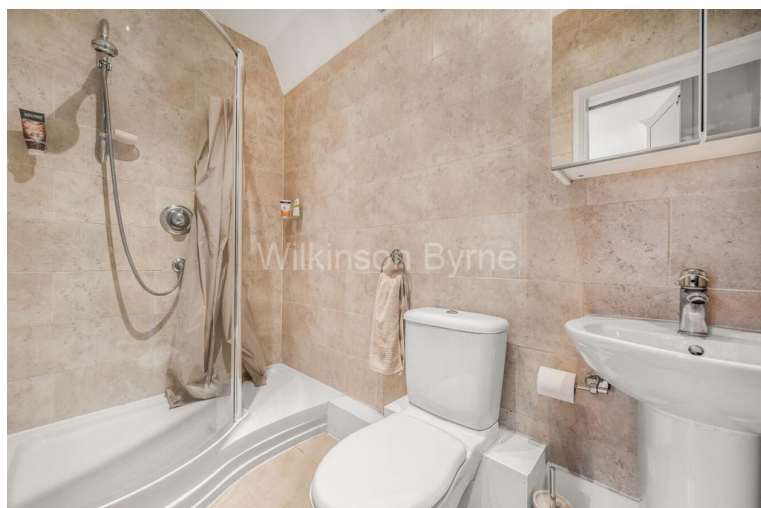


Queens Avenue, N21 3JE

£739,995 LEASEHOLD

Contemporary living meets period charm in this stunning 3-bedroom, 2-bathroom duplex apartment, set within an imposing Victorian property backing onto the New River. Spanning approximately 2,000 sq ft, the apartment is in excellent decorative condition and features a spacious 19ft reception room, a fully fitted kitchen/dining room, three generous double bedrooms, two stylish bathrooms, a private bar area, and its own private entrance and a GF W.C. A standout feature is the large, South-West facing private roof terrace offering far-reaching river views—perfect for relaxing or entertaining. Ideally located near green open spaces and excellent transport links including Winchmore Hill Station, the property also benefits from being close to outstanding local schools such as Winchmore School and a wide range of shops and amenities including Sainsbury's, Waitrose, and vibrant high street amenities.

T: 0208 365 8900 E: boundsgreen@wilkinsonbyrne.com W: www.wilkinsonbyrne.com



These particulars, whilst believed to be accurate set out as a general outline only for guidance and do not constitute any part of an offer or contract. Intending purchasers should not rely on them as fittings. Room sizes should not be relied upon for carpets and furnishings. The measurements given are approximate. No person in this firm's employment has the authority to make or give any representation or warranty in respect of the property.

Queens Avenue, Winchmore Hill, London, N21

Approximate Area = 1431 sq ft / 132.9 sq m
Limited Use Area(s) = 241 sq ft / 22.2 sq m
Total = 1672 sq ft / 155.1 sq m
For identification only - Not to scale



FIRST FLOOR



GROUND FLOOR

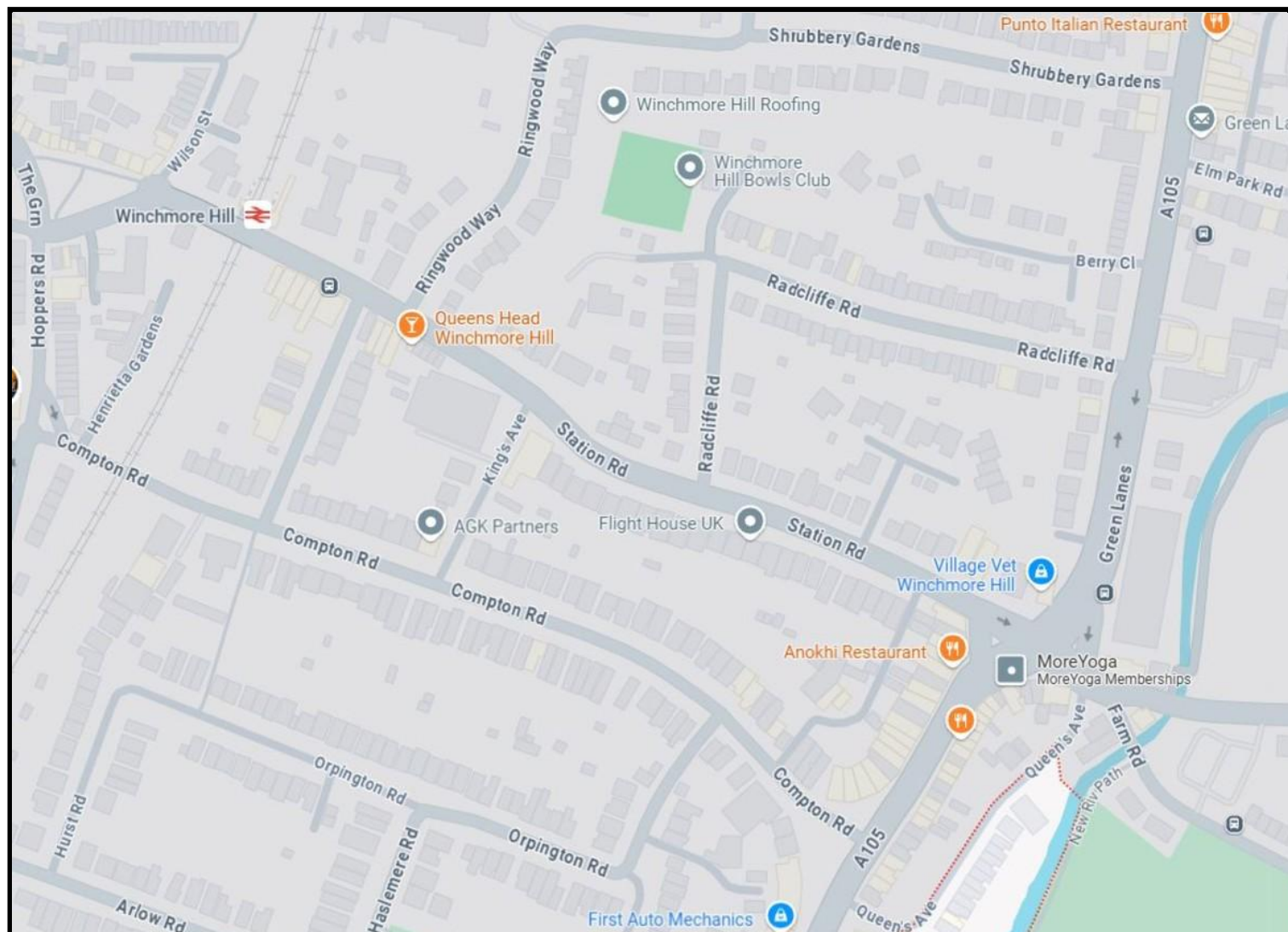
Denotes restricted head height



Floor plan produced in accordance with RICS Property Measurement 2nd Edition, Incorporating International Property Measurement Standards (IPMS2 Residential). Produced for Wilkinson Byrne. REF: 1283682

©nichecom 2025.





Score	Energy rating	Current	Potential
92+	A		
81-91	B		
69-80	C		70 C
55-68	D		
39-54	E	53 E	
21-38	F		
1-20	G		

Bounds Green Office
 3 Latham Court
 Brownlow Road
 London N11 2ES
 0208 - 365 - 8900
boundsgreen@wilkinsonbyrne.com

Turnpike Lane Office
 8 Turnpike Parade
 Green Lanes
 London N15 3EA
 0208 - 888 - 0022
turnpikelane@wilkinsonbyrne.com