

Lordship Lane, N22 5LD

£325,000 LEASEHOLD

A two bedroom first floor flat in a popular purpose built block, the property is has been redecorated, and offers a fitted kitchen, a modern fitted bathroom, an entry phone system and electric heating. Situated close to both bounds green tube and Bowes Park railway stations, this property is offered on a chain free basis.

T: 0208 365 8900 E: boundsgreen@wilkinsonbyrne.com W: www.wilkinsonbyrne.com

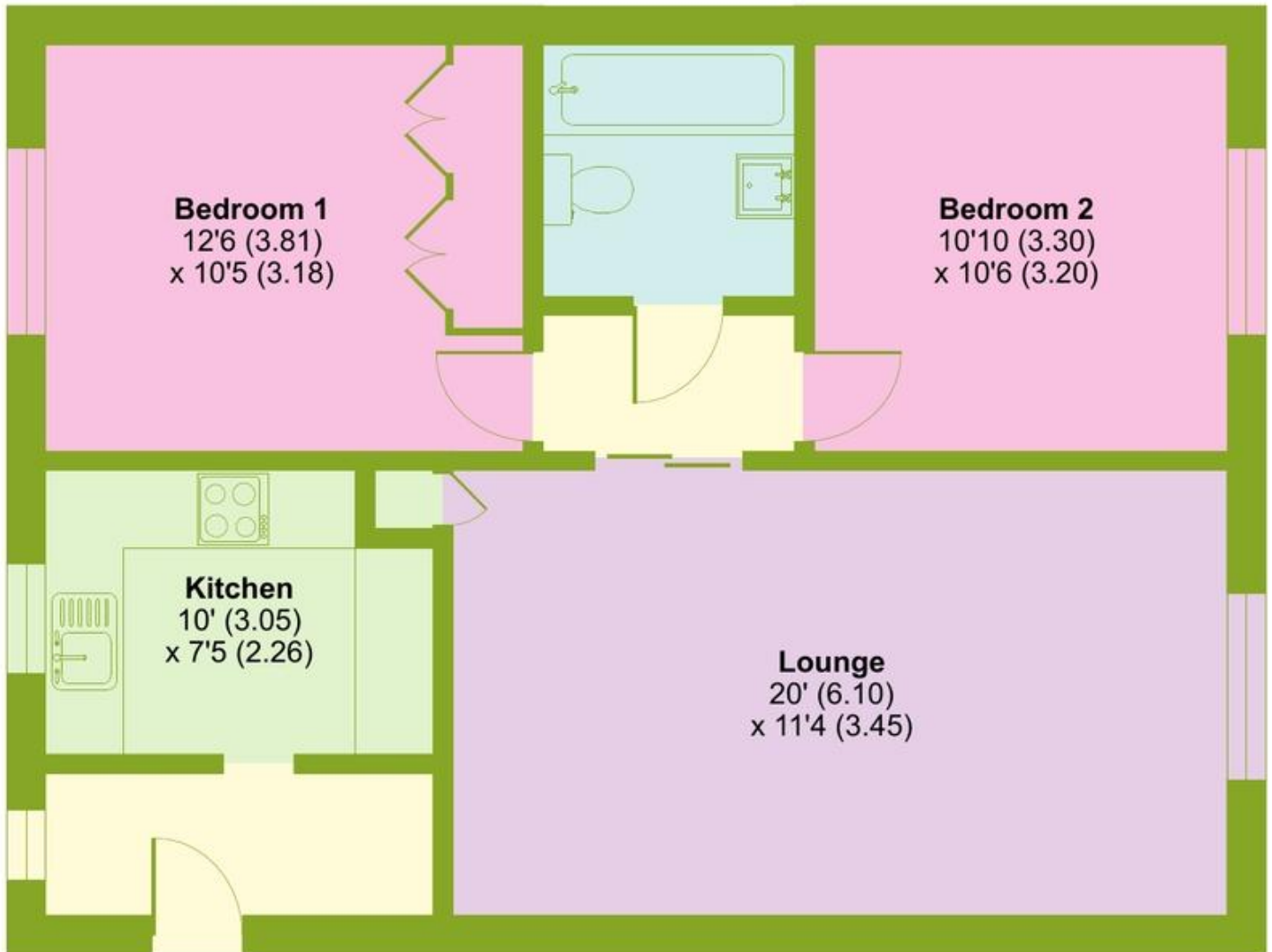


These particulars, whilst believed to be accurate set out as a general outline only for guidance and do not constitute any part of an offer or contract. Intending purchasers should not rely on them as fittings. Room sizes should not be relied upon for carpets and furnishings. The measurements given are approximate. No person in this firm's employment has the authority to make or give any representation or warranty in respect of the property.

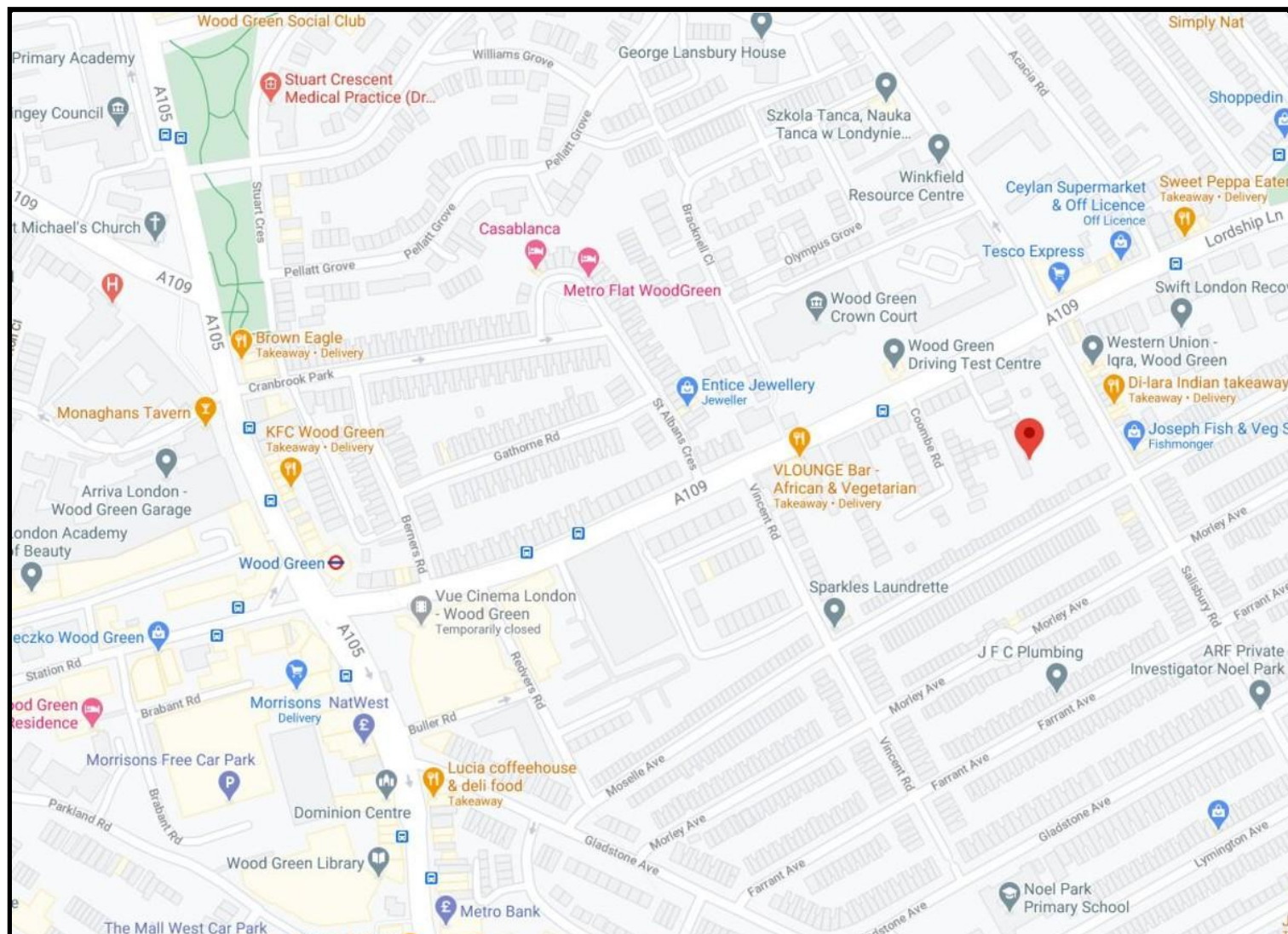
Lordship Lane, London, N22

Approximate Area = 686 sq ft / 63.7 sq m

For identification only - Not to scale



FIRST FLOOR



Score	Energy rating	Current	Potential
92+	A		
81-91	B		
69-80	C		79 C
55-68	D	64 D	
39-54	E		
21-38	F		
1-20	G		

Bounds Green Office
 3 Latham Court
 Brownlow Road
 London N11 2ES
 0208 - 365 - 8900
boundsgreen@wilkinsonbyrne.com

Turnpike Lane Office
 8 Turnpike Parade
 Green Lanes
 London N15 3EA
 0208 - 888 - 0022
turnpikelane@wilkinsonbyrne.com