



## Downhills Avenue, N17 6LG

**£685,000 FREEHOLD**

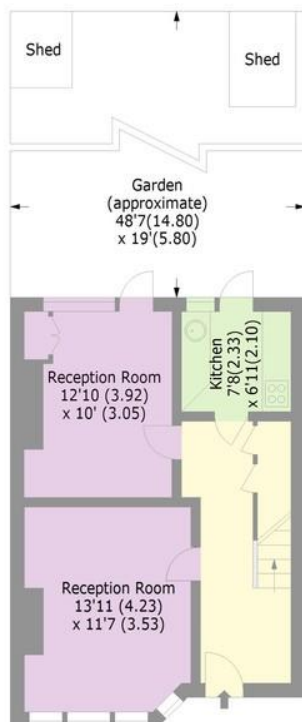
A five bedroom mid-terrace on a desirable residential street, moments away from the green open spaces of Downhills Park and Lordship Recreation ground. The property is perfect for a family wanting to add their own unique style, as well as living in this desirable location. The ground floor features two reception rooms, kitchen with access to a spacious rear garden. The ground floor also benefits from an abundance of storage space. The first floor boasts three bedrooms and a family sized bathroom. The second floor adds a further two bedrooms and a shower room. Downhills Avenue is conveniently situated to Green Lanes, Harringay and Wood Green with its superb selection of shops and restaurants as well as the highly acclaimed Salisbury Arms public house and Blend coffee shop. Transport can be found at Turnpike Lane (Piccadilly Line) Underground station.



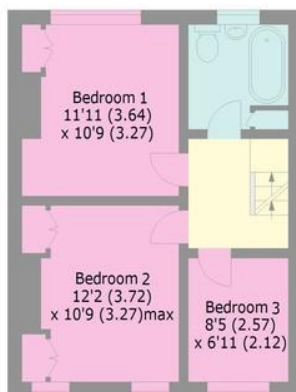


**Downhills Avenue, N17**

Approx. Gross Internal Area 1227 Sq Ft - 114.0 Sq M



GROUND FLOOR



FIRST FLOOR



SECOND FLOOR

Reduced headroom  
below 1.5 m / 5'0"





5



Bedrooms

2



Receptions

2



Bathrooms

Yes



Garden

**Tenure:**  
Freehold

**Energy Efficiency Rating:**  
58

**Bounds Green Office**  
3 Latham Court  
Brownlow Road  
London N11 2ES  
  
0208-365-8900

[boundsgreen@wilkinsonbyrne.com](mailto:boundsgreen@wilkinsonbyrne.com)

**Turnpike Lane Office**  
8 Turnpike Parade  
Green Lanes  
London N15 3EA  
  
0208-888-0022

[Turnpikelane@wilkinsonbyrne.com](mailto:Turnpikelane@wilkinsonbyrne.com)