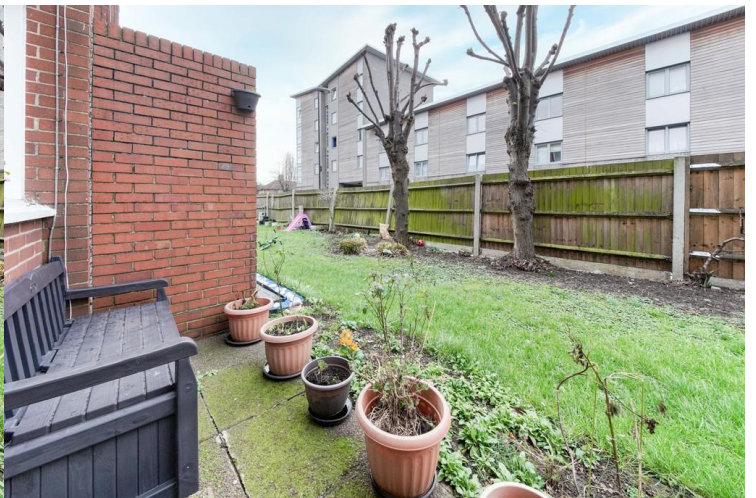
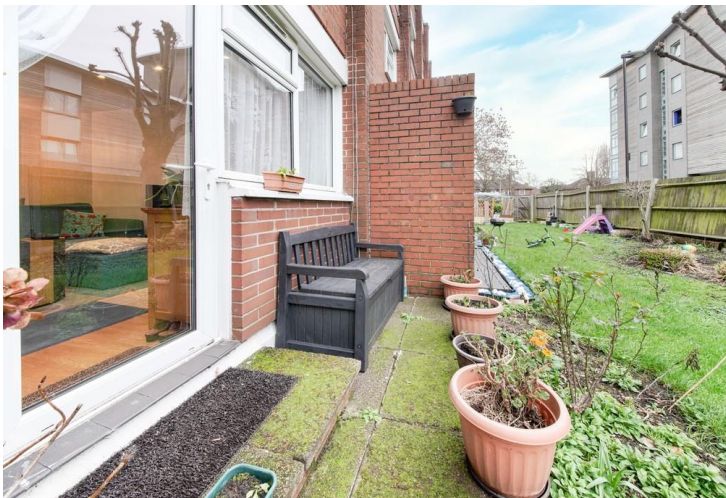


Sandra Close, N22 5HB

£350,000 LEASEHOLD

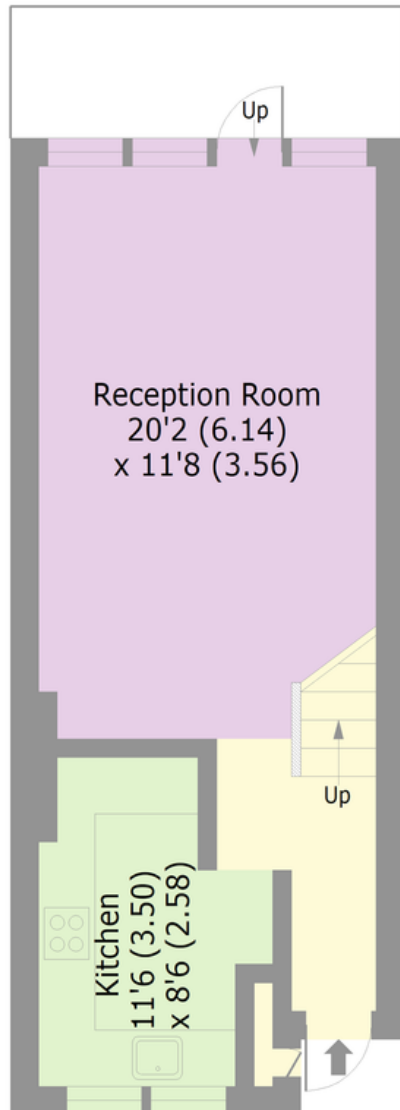
A spacious two-bedroom split-level maisonette in a well maintained purpose built block. The property has been tastefully decorated by the current vendor, occupying over 750 Sq ft of living space. Benefits include a spacious reception room with direct access onto private section of communal garden, contemporary kitchen, two double bedrooms and a stylish bathroom. Further benefits include built-in storage space & private external storage area. Sandra Close is ideally situated for the vibrant Wood Green shopping area with all its bars and restaurants and with easy access to both Wood Green and Turnpike Lane Underground station. The green open spaces of White Hart Lane Recreation Ground are also close by.

****Sole Agents****

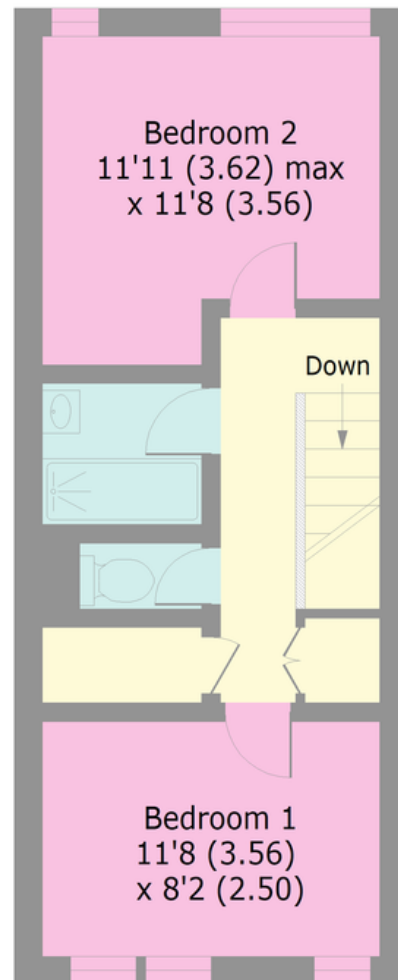


Sandra Close, N22


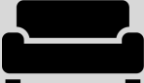


Approx. Gross Internal Area 750 Sq Ft - 69.7 Sq M



GROUND FLOOR



FIRST FLOOR

2		Bedrooms
1		Receptions
1		Bathrooms
Yes		Garden

Tenure: Leasehold
Energy Efficiency Rating: 77

Bounds Green Office
3 Latham Court
Brownlow Road
London N11 2ES
0208-365-8900

boundsgreen@wilkinsonbyrne.com

Turnpike Lane Office
8 Turnpike Parade
Green Lanes
London N15 3EA
0208-888-0022

Turnpikelane@wilkinsonbyrne.com