



Warkworth Road, N17 7BD

£1,700 PCM

A lovely three bedroom mid-terrace family house situated on a popular residential street. The property has recently been decorated by the current landlord and would be perfect home for a family or professional sharers. The property offers a spacious lounge, fitted kitchen/diner, upstairs bathroom, three bedroom and a 70ft private rear garden. Warkworth Road offers convenient access to Wood Green and Turnpike Lane Underground Station (Piccadilly Line Zone 3). Within a couple of minutes there are bus routes with connections into central London and a new Sainsbury's Local store. Lordship recreation ground is also close by.

****Available now****

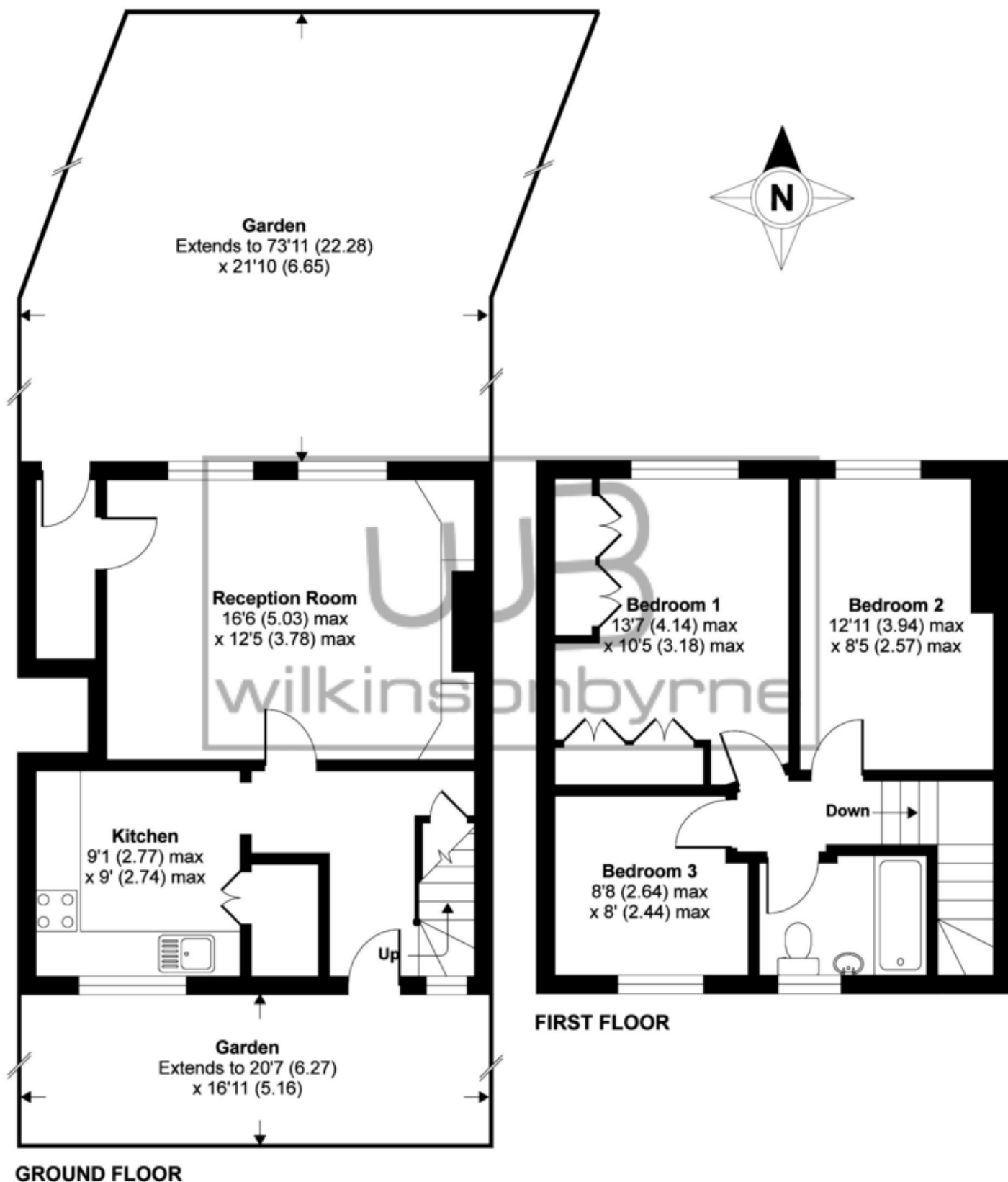
T: 0208 888 0022 **E:** turnpikelane@wilkinsonbyrne.com **W:** www.wilkinsonbyrne.com



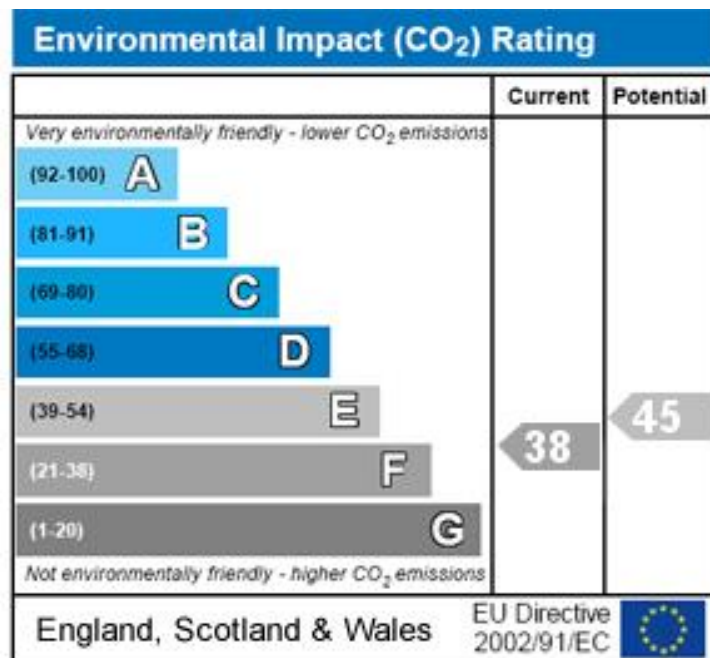
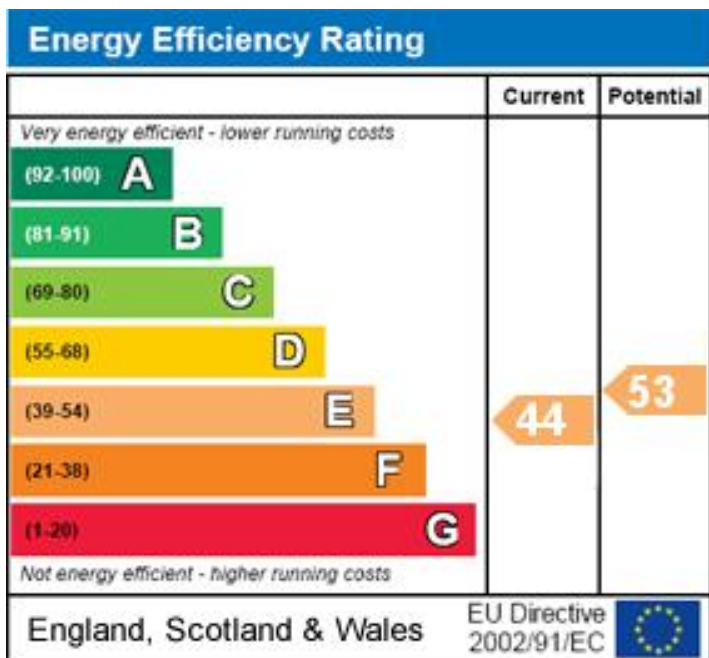
These particulars, whilst believed to be accurate set out as a general outline only for guidance and do not constitute any part of an offer or contract. Intending purchasers should not rely on them as fittings. Room sizes should not be relied upon for carpets and furnishings. The measurements given are approximate. No person in this firm's employment has the authority to make or give any representation or warranty in respect of the property.

Warkworth Road, London, N17

APPROX. GROSS INTERNAL FLOOR AREA 855 SQ FT 79.4 SQ METRES



Whilst every attempt has been made to ensure the accuracy of the floor plan contained here, measurements of doors, windows and rooms are approximate and no responsibility is taken for any error, omission or misstatement. These plans are for representation purposes only as defined by RICS Code of Measuring Practice and should be used as such by any prospective purchaser. Specifically no guarantee is given on the total square footage of the property if quoted on this plan. Any figure given is for initial guidance only and should not be relied on as a basis of valuation.



Bounds Green Office
 3 Latham Court
 Brownlow Road
 London N11 2ES
 0208 - 365 - 8900
boundsgreen@wilkinsonbyrne.com

Turnpike Lane Office
 8 Turnpike Parade
 Green Lanes
 London N15 3EA
 0208 - 888 - 0022
turnpikelane@wilkinsonbyrne.com