



Remington Road, N15 6SS

£300,000 LEASEHOLD

A delightful two double bedroom second floor apartment set within a well maintained low rise purpose built block. The property boasts a spacious reception room with access to a balcony, kitchen/diner, two double bedrooms, bathroom and separate cloakroom. Offering access to Manor House tube (Piccadilly Line Zone 2) as well as Finsbury Park and Harringay shopping arena. Seven Sisters Underground/Overground is nearby with links to Liverpool Street. Early viewing is highly recommended.

****Chain Free****

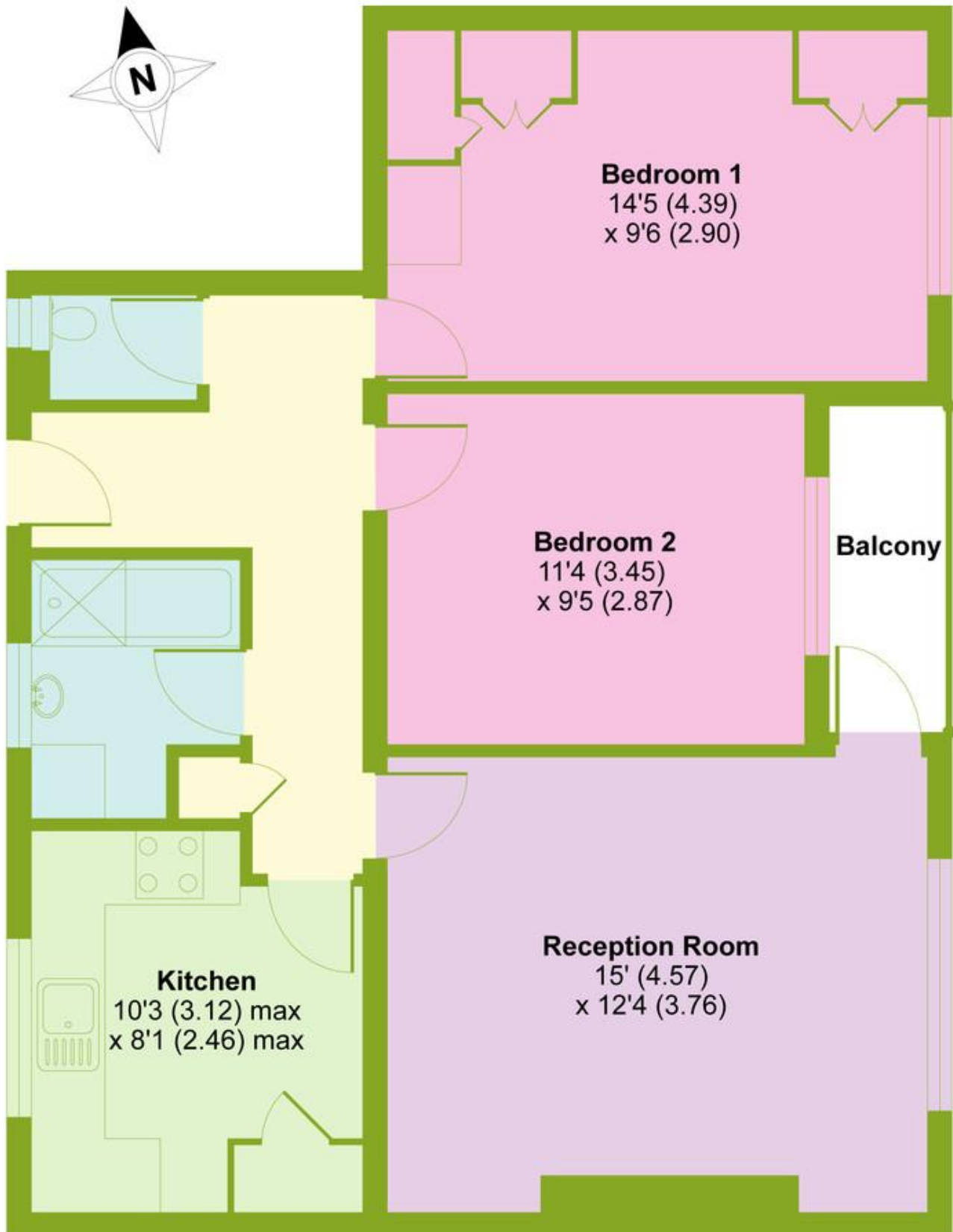
T: 0208 888 0022 E: turnpikelane@wilkinsonbyrne.com W: www.wilkinsonbyrne.com



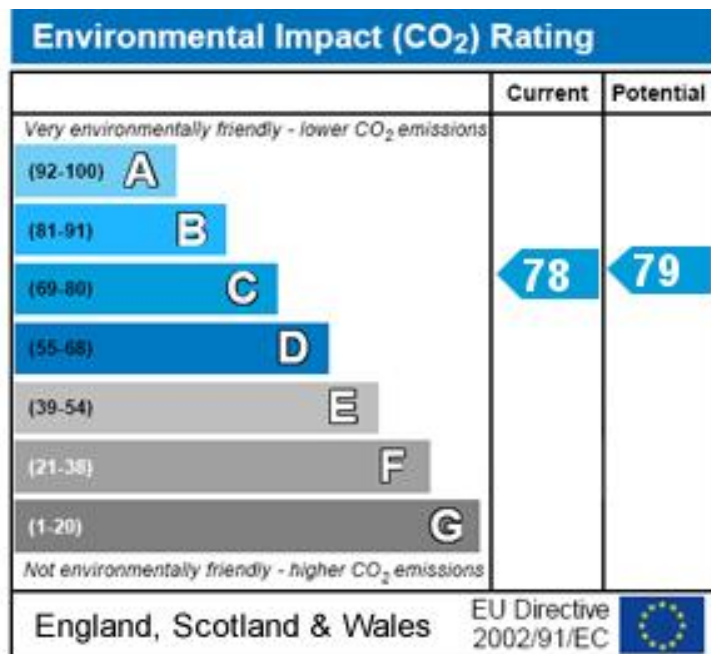
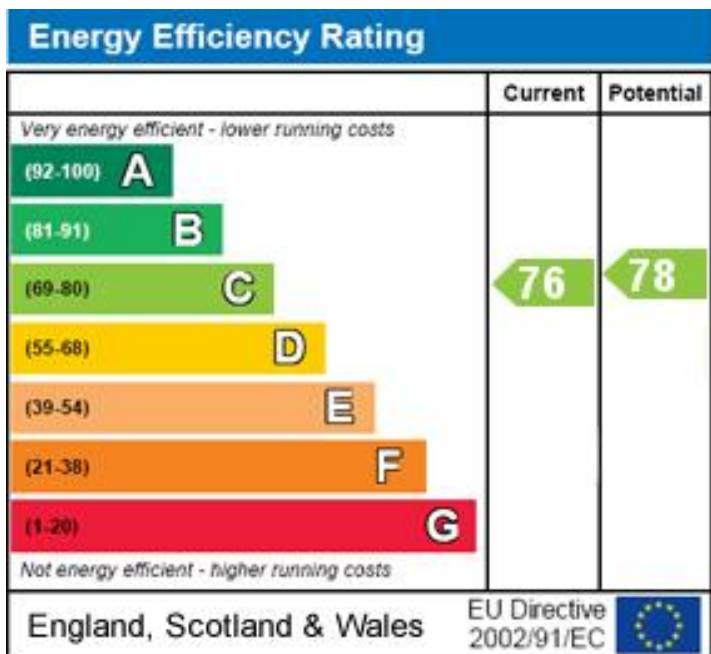
These particulars, whilst believed to be accurate set out as a general outline only for guidance and do not constitute any part of an offer or contract. Intending purchasers should not rely on them as fittings. Room sizes should not be relied upon for carpets and furnishings. The measurements given are approximate. No person in this firm's employment has the authority to make or give any representation or warranty in respect of the property.

Remington Road , Tottenham, London, N15

APPROX. GROSS INTERNAL FLOOR AREA 676 SQ FT 62.8 SQ METRES



SECOND FLOOR



Bounds Green Office
 3 Latham Court
 Brownlow Road
 London N11 2ES
 0208 - 365 - 8900
boundsgreen@wilkinsonbyrne.com

Turnpike Lane Office
 8 Turnpike Parade
 Green Lanes
 London N15 3EA
 0208 - 888 - 0022
turnpikelane@wilkinsonbyrne.com